

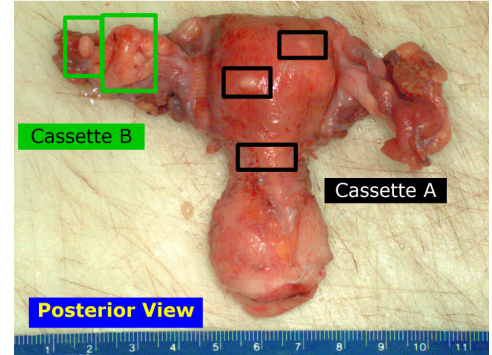
PAXcam[™] *Gross Imaging Station*



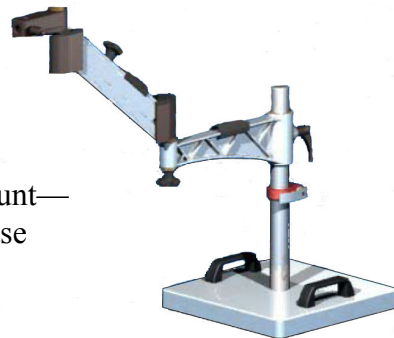
- Fully integrated system includes stand, lighting, zoom lens for variable magnifications, PAXcam digital camera for live preview and still image capture, PAX-it software for image archiving and workflow, footswitch, and shelves for laptop and illuminator.
- Designed to mount directly over the grossing area--no need to move your specimens to a central copystand for imaging.
- Long working distance lens means the camera assembly is away from the specimens so it does not interfere with specimen handling.
- Focus and zoom adjustments are more easily controlled by hand than by footswitch. Our unique lens handles may be covered or cleaned, and mean there is no need to handle the lens itself while making quick zoom and focus adjustments.
- Three-button footswitch is programmed for camera functions including image capture.
- Many zoom ranges are possible, depending upon the distance above the surface where the system is locked. For example, PAXcam can be set to zoom from a 8.5" x 11" field of view to 1.75" x 2" at 27 inches working distance. Or, for extremely magnified views it can be set to zoom from ca. 0.4 x 0.5" field of view to 2 x 2.75" at 8 inches working distance. User can choose the working distance and zoom range combination that works best for their application.
- Unlike a copy stand, the assembly is on a retractable arm so it can be pushed back out of the way when not in use.
- Unlike a copy stand, the lighting is cold light, and moves with the camera, rather than being fixed on bulky side arms.



- While zooming through the zoom range, there is no need to readjust the lighting or to refocus.
- Lighting can be straight down on sample for even, shadow free illumination, or may be angled from the side to cast shadows for specimens with relief features.
- [PAX-it Quicksave function](#) allows macro images to automatically be put into folders by accession number (or other user-defined database field entry). When micro shots are taken with the compatible PAX-it microscope setup, those images automatically find that same case folder based on the accession number and are placed there.
- [PAX-it Annotation functions](#) allow templated annotations to be overlaid on captured images, for example to indicate block preparation or cutting angles.
- The PAXcam TWAIN interface is compatible with most A/P imaging components to capture images directly into your case management software as well.
- Optional [PAXcam CONNECT module](#) may be used to stream a live view of the grossing procedure to another site on your network (or over the internet) for remote consultation.
- Options include a range of PAXcam models to fit your needs and budget.
- Optional configurations also include a wallmount unit, benchtop or cart mount, and a wheeled floorstand for autopsy or portability from bench to bench.



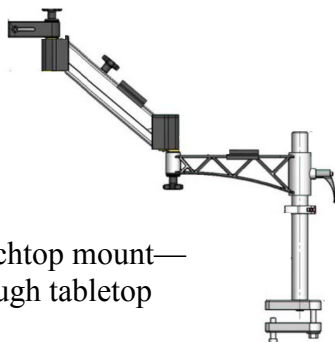
Benchtop mount—
steel block base



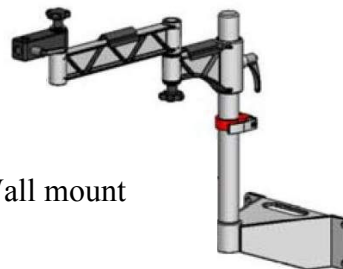
Heavy duty floorstand
with casters



Benchtop mount—
through tabletop



Wall mount



MIS, Inc
 707 N. Iowa Avenue
 Villa Park, IL 60181 USA
 630-279-4000 tel
 630-279-4050 fax
www.paxcam.com