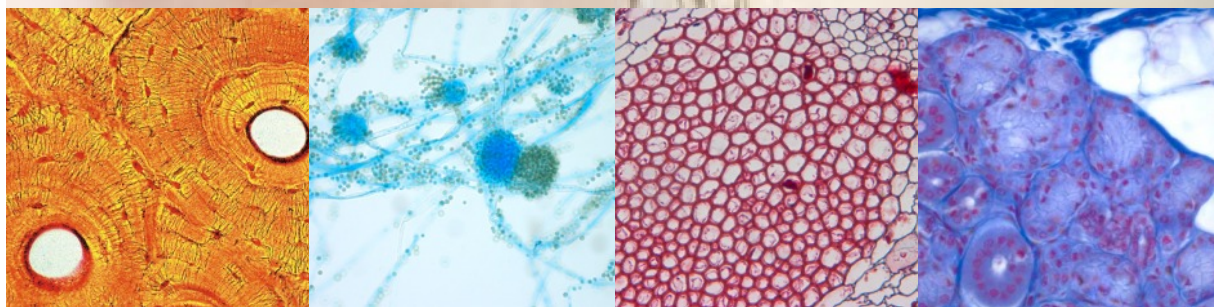


LABOMED
ideas for vision

Fast Research Grade Cameras with High Resolution



Making Superior Image

Quality Affordable

Ease of operation, high resolution and excellent color reproduction are the distinguishing features of the microscope camera model iVu 1250. With 1.4 megapixel resolution, the camera is ideal tool for high-quality image documentation and elementary image analysis.

Convenient to Use

For daily tasks in laboratory routine, the camera delivers perfect images at the touch of a button, controlled by ProgRes® CapturePro, an intuitive image acquisition software that provides comprehensive functionality for working with Microsoft Windows® or Apple Macintosh® operating systems. The camera control has already been directly integrated in many of the established image processing software packages. Hence, you are free to fully concentrate on your current project task.

Benefits

- Fast frame rates
- Perfect color reproduction
- Outstanding image quality
- Easy operation
- For all contrast methods in light microscopy
- Safe investment
- Excellent price-performance ratio

Easy to Connect

Configured with standard interfaces such as C-Mount and IEEE1394™ Firewire, iVu 1250 easily connects to any microscope and computer.

ProgRes® Capture Pro

The ProgRes® Capture Pro camera control software is a combination of versatile tools and features to suit the imaging needs.

Capture Pro allows still image capturing with guided fine focus control with precise display of region of interest (ROI). The capture mode enables still, video and time interval image capturing.

The advance features include white balance, black adjustment, measurement on live images, cropping live image, auto exposure settings, gain controls, over exposed area identification, shading correction, background correction and fluorescence module.

Various capturing techniques like binning enhances the quality of captured images and adds to the excellence of your work.

iVu 1250

- High resolution for fine details.
- 42 bit colour digitization.
- Easy connectivity via C-Mount, Firewire™ and TWAIN.
- Intuitive image capture software for MS Windows® and Apple Macintosh®.
- Best images for best price.

iVu 1250



LABOMED

ideas for vision

Main application areas

- Genetics
- Microbiology
- Pathology
- Cell biology
- Pharmacy
- Life Science
- Material science
- Metallography
- Mineralogy
- Chemistry
- Macrophotography
- Forensics

Technical Data - iVu 1250

CCD sensor	2/3" 12.5 Megapixel Progressive Scan Color CCD	
	Active area : 8.8mm x 6.6mm	
Sensor resolution	1360 x 1024 pixel	
Pixel Size	6.45 µm x 6.45 µm	
A/D conversion	3 x 14 Bit RGB	
Pixel clock	12 MHz/ 24.5 MHz	
Dynamic range	69 dB/ 67 dB	
Max. exposure	300s	
Analog gain	1x...8x	
Frame rate (image size)	31 fps (680 x 512)	
Image resolution:	Standard	1360 x 1024
	HFRM	680 x 512 and 340 x 256
	Binning	453 x 340 and 272 x 204
	Microscanning	4080 x 3072 and 2720 x 2048
Cooling	Peltier, fan, hermetically sealed sensor	
Digital interface	IEEE 1394a Firewire™	
Optical connection	C- Mount (0.63 x TV adapter recommended)	
Tripod thread	Dual thread 3/8" and 1/4"	
Voltage supply	8...33 VDC (via IEEE1394 Connector)	
Power consumption	approx. 8W	
Ambient conditions	Temperature: +5°C... +35°C	
	Humidity: 5%... 80%, not condensing	
Dimensions (LxWxH)	145mm x 93mm x 123mm	
Weight	800 g	
Capture software	CapturePro(TWAIN & Stand-Alone)	
Computer requirements	PC: Microsoft Windows® 2000/ XP/ Vista	
	Mac: Apple Macintosh®	
	OS x 10.4 or higher 3 GHz CPU, 1 GB RAM,	
	64 MB graphics, IEEE1394 Firewire™ (OHCI compliant)	

Our policy is one of continuous development. Labo America, Inc., reserves the right to change design and specifications without prior notice.

Labo America Inc.
920 Auburn Ct.
Fremont CA 94538
U.S.A.

Telephone: (510) 445 1257
Fax: (510) 991 9862
sales@laboamerica.com
www.laboamerica.com