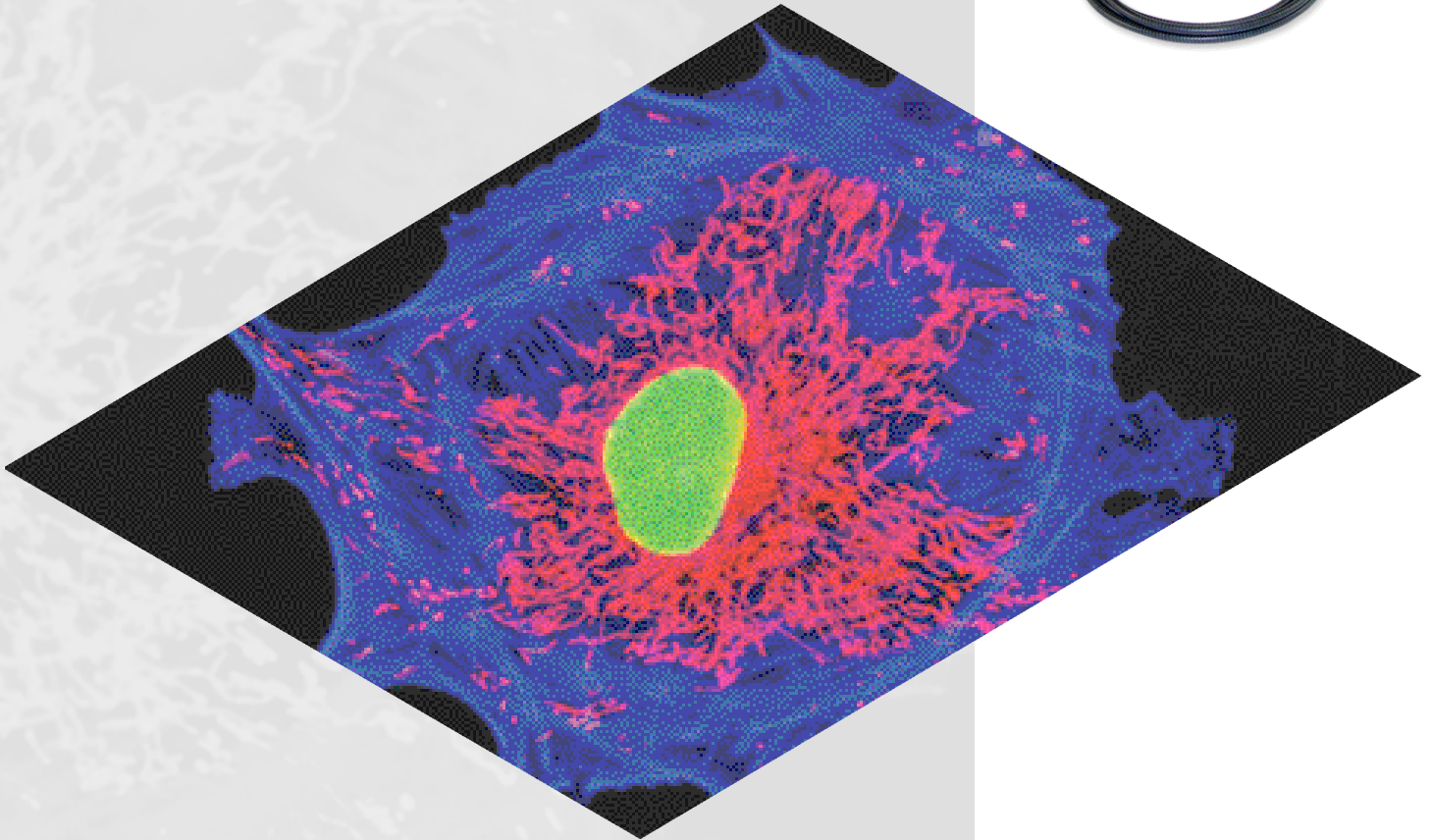
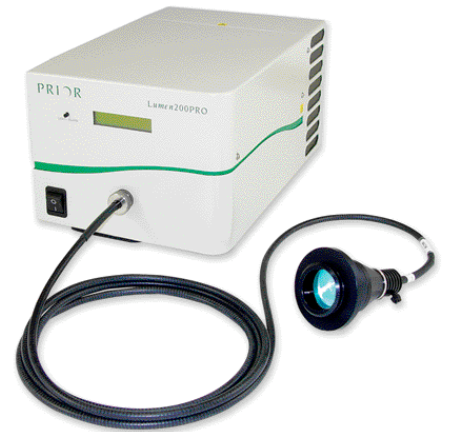


Lumen 200PRO

PRIOR
Scientific

Advanced Fluorescence Illumination



Lumen 200PRO: Superior Fluorescence Illumination

Lumen 200PRO is a high performance, cost effective system for fluorescence illumination designed and manufactured by Prior Scientific. Prior Scientific has been manufacturing illumination systems for fluorescence microscopy for over 20 years. This wealth of experience has been used to design the most powerful, cost effective and flexible fluorescence illumination system on the market. Fluorescence has never been so easy!

The Lumen system from Prior has the potential to revolutionize the way you illuminate your fluorescently labelled specimens. It replaces, short life, hard to set up mercury and xenon illuminators with a system that really is state of the art in all respects with significantly lower running costs.

An advanced metal halide lamp produces a spectral output that closely mirrors traditional mercury (HBO) style lamphouses with intensity peaks that have a larger bandwidth leading to improved excitation. Each lamp is good for up to 2000 hours, compared to a maximum of 300 hours with a typical HBO system.

Another major step forward is the way that the Lumen 200PRO series delivers the light to the specimen. By mounting the lamp away from direct mechanical contact with the microscope there is a marked reduction in heat transfer to the microscope making it more stable for long term experiments. The liquid light guide that links the lamphouse and microscope also homogenises the light meaning that bulb alignment is no longer critical and evenness of illumination is achieved without any user adjustments. Bulb changes, which already happen much less frequently, now take significantly less time to complete.

The Lumen 200PRO features an integrated motorized six position filter wheel for control of excitation wavelength and a variable aperture shutter for attenuation or shuttering of the light source.

Powerful 200W Illumination

A 200W metal-halide lamp gives a similar spectral output to more traditional (HBO) mercury vapor lamps with up to 20 times longer bulb life.

Long Life Lamp - Up to 2000 Hours

The metal-halide lamp is safe for use for up to 2000 hours. Sophisticated electronics mounted on every Lumen 200 lamp monitor the number of hours used and warn the user through both a visual and audible alarm, when lamp replacement is necessary.

Easy Lamp Replacement

Unlike mercury vapor lamps the lamps used in the Lumen 200PRO system require no precision arc alignment for them to provide bright and even illumination. Lamps are pre-centered, changes take only a few minutes.



Flexible Liquid Light Guide

A highly efficient two or three meter liquid light guide delivers full spectrum illumination. Coupling adapters are available for most modern research microscopes.



Low Heat Transfer

By mounting the Lumen 200PRO remotely from the microscope stand, heat transfer is eliminated. This aids stability and helps reduce drift due to thermal expansion in long term experiments.

Stabilized Output

The Lumen 200PRO features a stabilized DC power supply to drive the lamp. With a greater than 99% @ 27KHz uniformity in output, the Lumen provides an ideal light source for quantitative and comparative microscopy.

Shutters & Attenuation

The Lumen 200PRO includes a stepper motor driven motorized light attenuator which can also function as a high speed shutter. Light intensity can be quickly and reliably set in 1% increments from 0-100%. Alternatively, the Lumen 200PRO operating as a high speed shutter can cycle continuously from completely opened to completely closed in less than 20ms. Continuous maximum speed operation is not a problem with the Lumen 200PRO's stepper motor driven shutter.

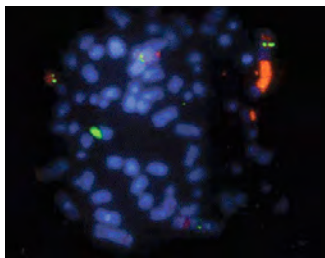


Lumen 200PRO Features

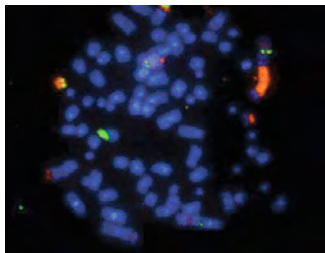
- 200W metal halide lamp
- Up to 2000 hours lamp life
- Fast and easy lamp changes
- No complex re-alignment required
- Reduced heat transfer giving greater stability
- Adapters for most modern research microscopes
- Higher output than traditional light sources
- DC power supply ensures stable output
- Internal motorized six position filter wheel
- Fast selection of excitation wavelength
- No filter wheel vibration to blur images
- Computer controlled light attenuation & wavelength switching
- Driven by ProScan™II, OptiScan™II, and Prior PCII controllers
- Motorized variable aperture shutter
- Open and close shutter in <20ms
- Switch between adjacent filters in <55ms

Lumen 200PRO Performance Data

One of the common problems with the conventional fluorescence microscope light source is optimizing and maintaining its proper adjustment to provide even illumination over the whole field of view. Uneven illumination becomes much more of a problem when using digital imaging. This is because contrast stretching used to bring out the signals from the background also enhances uneven illumination across the image. Note how the chromosomes in the images taken using a conventional lamp become darker around the periphery of the image, the red signal on the left is nearly lost altogether.

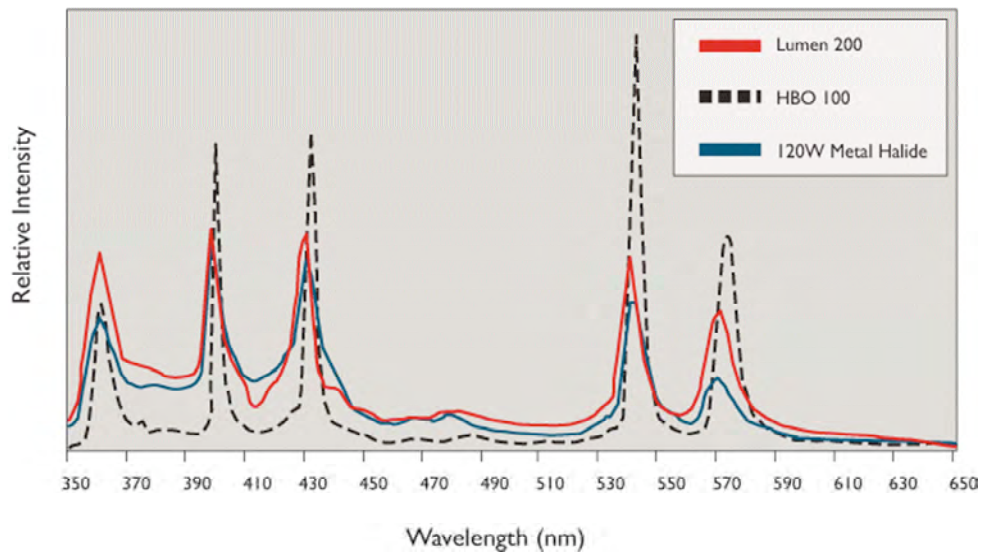


Sub optimal illumination with conventional lamp



Even illumination with Lumen 200

Lumen 200 Spectral Output



CERTIFICATE NO: FM 61600
STANDARD: BS EN ISO 9001:2000



PRIOR SCIENTIFIC INSTRUMENTS LIMITED
3-4 FIELDING INDUSTRIAL ESTATE
WILBRAHAM ROAD FULBURN CAMBRIDGE CB1 5ET
TELEPHONE 01223 881711 FAX 01223 881710

PRIOR SCIENTIFIC INC.
80 RESERVOIR PARK DRIVE
ROCKLAND MA 02370-1062
TELEPHONE 781-878-8442 FAX 781-878-8736

VISIT PRIOR ON THE WEB AT www.prior.com
Specifications subject to change without notice.

PART NO. LUMEN200 2K 02/07