

# EXI-410 Inverted Microscope

**INVERTED BIOLOGICAL  
& TISSUE CULTURE  
MICROSCOPE  
FOR LABORATORY,  
TEACHING & CLINICAL  
APPLICATIONS**

NIS60 Infinity Corrected Optical Path,  
Variable 3-Watt S-LED Illumination  
& Side Photo Port



*Delivering quality through vision*

# EXI-410 Inverted Microscope

ACCU-SCOPE's new EXI-410 Inverted Microscope delivers outstanding optical performance, convenience and flexibility to researchers, educators and clinicians. Ideal for the daily rigors of tissue culture applications and more advanced observation methods, the EXI-410 features a newly designed NIS60 infinity-corrected optical path with long working distance Plan Achromat and semi-Apochromatic objectives and an extra-long working distance condenser.

The EXI-410 is available in three standard configurations featuring a selection of contrast methods including brightfield, phase contrast, emboss contrast and fluorescence, suitable to address a wide variety of applications.

## SPECIFICATIONS

<b>Optical System</b>	NIS60 Infinity Optical System, f=200mm
<b>Observation Methods</b>	Brightfield, Phase Contrast, Emboss Contrast, Fluorescence
<b>Viewing Body</b>	Seidentopf Viewing Head, Inclined at 45°, Interpupillary 48-75mm; binocular head rotates to raise/lower viewing position by 35mm; ø30mm eyetubes; left-side camera port (light split with eyepieces: 100/0 and 0/100)
<b>Eyepieces</b>	WF10x/22mm
<b>Nosepiece</b>	Quintuple Nosepiece
<b>Objectives</b>	Infinity LWD Plan Phase 10x, 20x, 40x Infinity LWD S-APO Fluor Phase 4x, 10x, 20x, 40x Infinity LWD S-APO Plan Fluor 4x, 10x, 20x, 40x
<b>Stage</b>	Fixed plain stage 170mm(X) × 250mm(Y); 300mm wide with auxiliary stages installed; Optional mechanical stage movement range 129mm(X) × 83mm(Y)
<b>Holders</b>	<ul style="list-style-type: none"> <li>• Terasaki holder / ø65mm petri dish holder</li> <li>• ø35mm petri dish holder</li> <li>• ø54mm petri dish holder, hemocytometer, glass slide holder</li> <li>• ø90mm petri dish holder</li> <li>• Universal holder for Terasaki plate holder, glass slide, ø35-65 dish and hemocytometer</li> <li>• Well clamber</li> </ul>
<b>Condenser</b>	Extra-long working distance condenser, WD 75mm, N.A. 0.3
<b>Slider</b>	Universal phase contrast slider 4x, 10x/20x/40x, filter slot
<b>Stand</b>	Cast aluminum alloy
<b>Illumination</b>	3 watt S-LED transmitted illuminator
<b>Fluorescence</b>	3 watt LED transmitted illuminators: DAPI 365nm, 395nm or 405nm; GFP/FITC 470nm; TRITC 525nm; Texas Red 560nm; Cy5 640nm; 3-position filter cube turret
<b>Focusing</b>	Coaxial coarse and fine focus; fine-focus precision 0.002mm; focus range: 7mm up, 1.5mm down; total travel limit 18.5mm
<b>Accessories</b>	Camera adapters, eyepieces, reticles, micrometers, IF550nm green filter, Dust cover, Centering telescope
<b>Dimensions (LWH)</b>	543mm x 243mm x 470mm (563mm x 243mm x 470mm with fluorescence configuration)
<b>Warranty</b>	5-year limited warranty for parts, labor and electronic components. 1-year warranty on LED bulbs

*Design, features and specifications are subject to change without notice.*

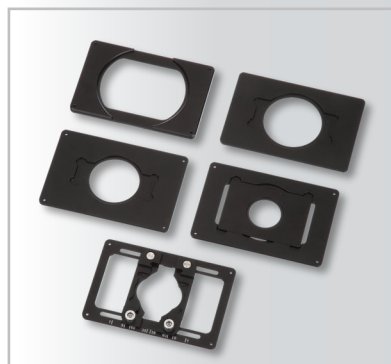
ISO 9001

ISO 14001

CE ANTI-MOLD

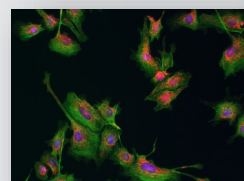


Standard side-mount camera port allows easy access to camera controls.

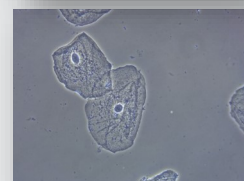


Optional holders accommodate a variety of specimens.

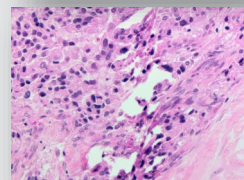
Fluorescence



Phase Contrast



Brightfield



Embossed



Meyer Instruments, Inc.  
4202 Bear Lodge Court Houston, TX 77084  
281-579-0342  
email: rdm@meyerinst.com • www.meyerinst.com

v112019:JPM