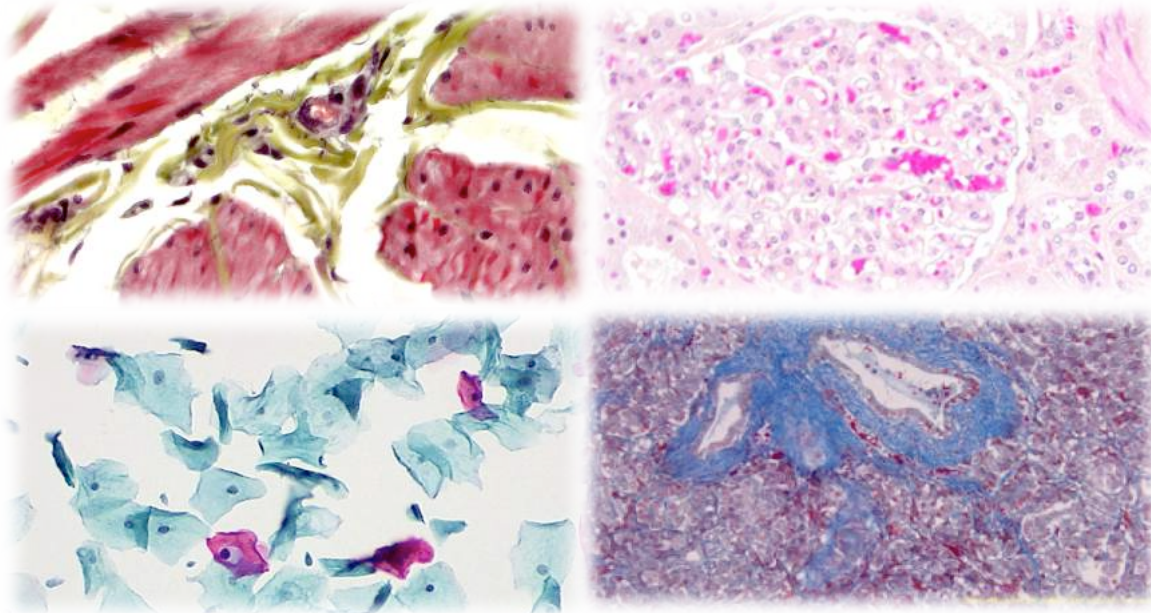


## UNMATCHED QUALITY AND SIMPLICITY

The NEW **HD-310U** video camera is a game-changer for live imaging applications. This is a unique camera to the industry, providing simultaneous outputs via HDMI and USB 3.0. The HDMI output connects directly to an HD display for live viewing (no PC required); while the new USB 3.0 output allows real-time live viewing and image capture on a PC – both at *fast* 60 fps! The HD-310U utilizes the latest color CMOS sensor to provide increased sensitivity to display impeccably clear images for both brightfield and bright fluorescence applications. The simplistic MagicApp software offers digital camera adjustments and enables users to snap images with the click of a mouse.

- HDMI 1080p output at 60fps for live viewing (no PC required)
- USB 3.0 1080p output at 60fps for PC connection
- USB & HDMI outputs can be viewed simultaneously
- Factory programmed to display best possible image
- Exceptional color reproduction - 12-color channel matrix
- Automatically adjusts to changes in light sensitivity
- MagicApp software included for live image capture
- Plug-and-play camera that DOES NOT require training

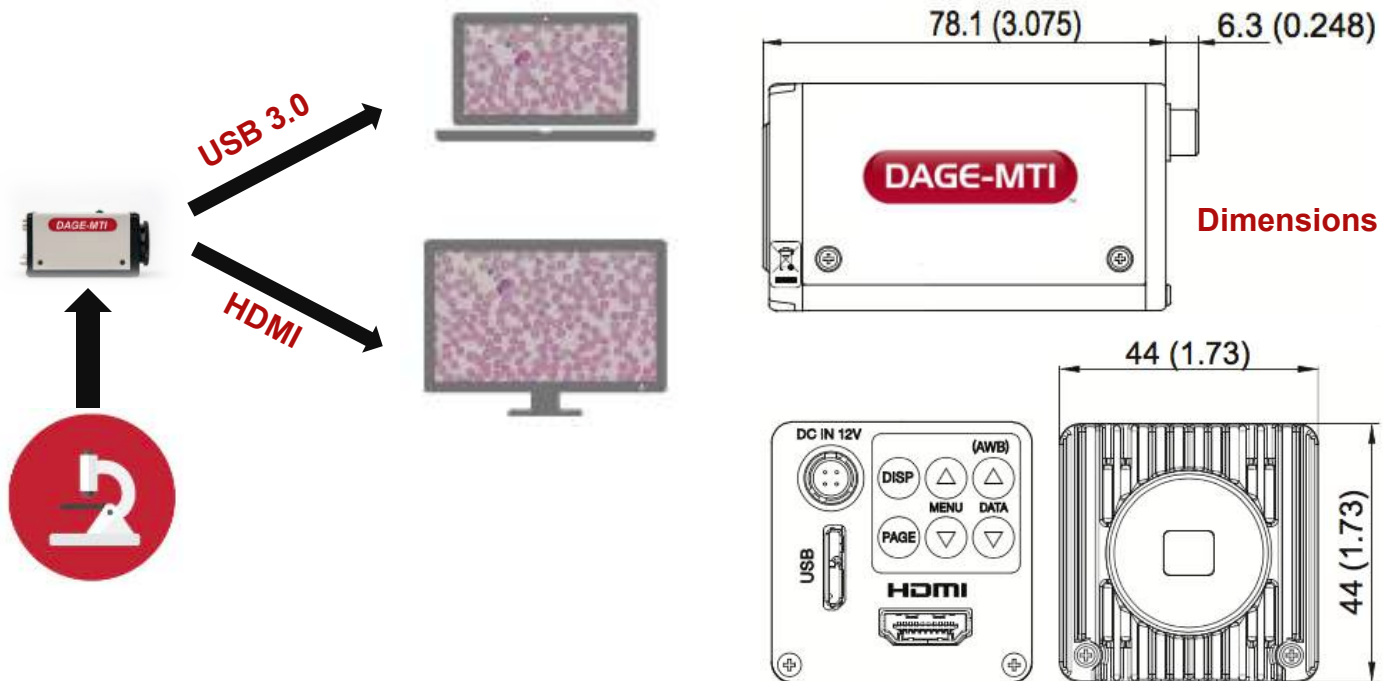


**Pathology      Microscopy      Tumor Board Review**

**Classroom Demonstrations      Semiconductor Inspection      Brightfield**

**Live Cell Imaging      Metrology      Scientific Imaging**

## UNMATCHED QUALITY AND SIMPLICITY



### HD-310U CAMERA - SPECIFICATIONS

Image Sensor:	1/2.8 inch color CMOS (progressive scan)
Output Pixels:	Horizontal: 1920, Vertical: 1080
Output Signal:	HDMI Type A Terminal USB Video Class 1.1 Micro-B connector (in conformity with USB 3.1 Gen 1) 1920 x 1080 – 60fps (USB 3.0) 1920 x 1080 – 12fps (USB 2.0)
Sensitivity:	F10 standard (2000lx, 3100k, gain OFF, gamma OFF, 59,94Hz)
Power:	DC 12V +/- 10%, power consumption approx. 4.5W
Lens Mount:	C-mount
Coupler:	0.35X microscope coupler recommended
Dimensions:	1.73" x 1.73" x 3.07"; 44mm x 44mm 78mm
Operating Temperature:	-0° C to 40° C (32° F to 104° F)
Operating Humidity:	90° or less (non-condensing)
Recommended PC:	Windows 8, 10 (32 & 64 bit)
Gain:	Auto / Manual : 0 ~ 20db / Off
White Balance:	AWB (Automatic White Balance) / Manual
Shutter:	Auto / Manual (Off ~ 1/1000s)
Image Optimization:	Gamma Correction, Color Correction, Chroma, Flip/Mirror, Digital Crosshairs
Memory Files:	5 Files Available
Class A digital apparatus complies with Canadian ICES-003	

*\*Design and specifications are subject to change without notice*