

# EXI-310 Inverted Microscope

## HIGH PERFORMANCE RESEARCH GRADE

INVERTED BIOLOGICAL  
& TISSUE CULTURE MICROSCOPE  
FOR TEACHING, CLINICAL,  
LABORATORY APPLICATIONS



*Delivering quality through vision*

# EXI-310 Inverted Microscope

ACCU-SCOPE's new EXI-310 Inverted Tissue Culture Microscope is the premier choice for observing cell and tissue cultures. With ultra-sharp, Infinity-corrected Plan optics, an extra-long WD condenser, and fluorescence capability, the EXI-310 delivers research-grade observation ideal for cell detection and cell transfection.

Choose from three standard configurations, or our modular system, which allows for total customization for live cell observation including brightfield, phase contrast, fluorescence, or any of these combinations.



Options include: attachable mechanical stage with right-hand coaxial control, auxiliary stages, petri dish holder, glass slide holder & Terasaki holder.

## SPECIFICATIONS

<b>Viewing Body</b>	Trinocular viewing head with photo tube, inclined 45° Light distribution binocular 100% or binocular/trinocular 80%/20%
<b>Objectives</b>	Three standard configurations: EXI-310-PH: Infinity corrected Plan 4x, Plan Phase 10x and 20x; EXI-310-PL: Infinity corrected Plan 4x, 10x and 20x; EXI-310-FL: Infinity corrected Plan Fluor 4x, 10x and 20x (Optional Infinity LWD objectives: Plan: 2x, 40x, 60x; Plan Phase: 4x, 40x; Plan Fluor: 40x, 60x; and Plan Fluor Phase: 20x, 40x;
<b>Eyepieces</b>	WF10x/22mm focusable eyepieces with roll-down eyeguards (Optional 10x/20mm, 15x/16mm and 20x/12.5mm)
<b>Nosepiece</b>	Side facing quintuple nosepiece
<b>Focusing System</b>	Coaxial coarse and fine focusing system with adjustable tension control and upper limit stop to prevent accidental damage to slides; all metal gears, brass for fine focus gear
<b>Stand</b>	Cast alloy aluminum
<b>Stage</b>	Fixed plain stage size 160mm x 250 with metal and glass inserts (Optional attachable mechanical stage, right hand coaxial control, movement range 120mm x 78mm with torque adjustment & coaxial control at front of stage, and auxiliary stages 70mm x 180mm (pair), Terasaki, Ø35mm petri dish and Ø54mm glass slide holders)
<b>Condenser</b>	ELWD condenser, N.A. 0.3, W.D. 72mm (Optional phase slider with 10x, 20x & 40x phase annuli)
<b>Illumination</b>	5 watt LED Koehler with variable intensity control; LED bulb is rated for over 25,000 hours of continued use; universal power supply 110-240v (Optional: 75w metal halide fluorescence; ScopeLED fluorescence)
<b>Accessories</b>	Filters: Ø45mm LBD (blue), green 550nm interference and ground glass Dust cover, instruction manual included (Optional: 45mm SIF800 infrared interference; ND25 or ND50 filters)
<b>Warranty</b>	5 year limited warranty for parts, labor and electronic components; 1 year warranty on LED bulb

*Design, features and specifications are subject to change without notice.*

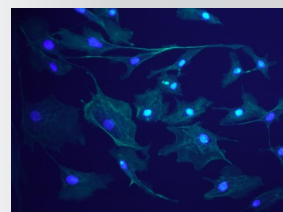
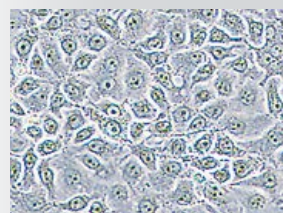
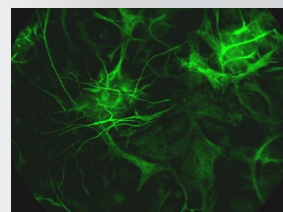
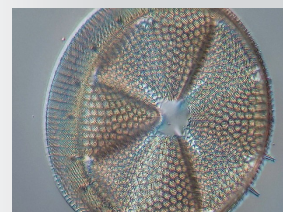
### ISO 9001 Certification

Design and production adheres to ISO 9001 international quality standard.

### ISO 14001 Certification

Design and production meets the requirements of international Standard ISO 14001 for environmental management.

**CE**  
**ANTI-MOLD**



Authorized Dealer:  
Meyer Instruments, Inc. 4202 Bear Lodge Court,  
Houston TX 77084 281-579-0342  
www.meyerinst.com

V.082115:JPM