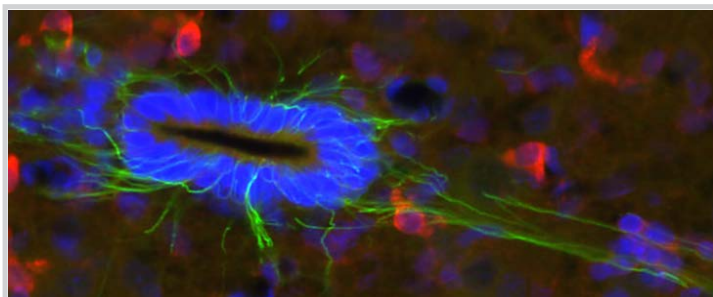


OptraSCAN® Immunofluorescence System — OS-FL Fluorescence Scanner

Small footprint, automated whole slide fluorescence scanning with high resolution imaging (for research use only)



Key Features

- ✓ Small footprint, whole slide, fluorescence scanner with 15-slide capacity
- ✓ High resolution imaging of digital slides and associated metadata
- ✓ User friendly, Intuitive LED touchscreen
- ✓ IMAGEPath® Image Management System included for viewing, storing and archiving
- ✓ TELEPath® Telepathology included for real-time, remote consultations
- ✓ Bar code and case reconciliation
- ✓ Cloud-enabled with instant cloud-loading capability
- ✓ Easy installation
- ✓ Affordable price

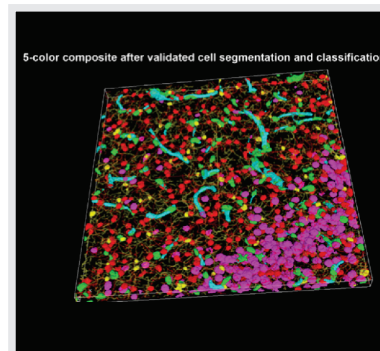
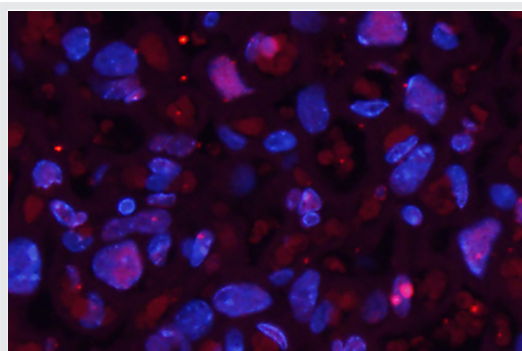
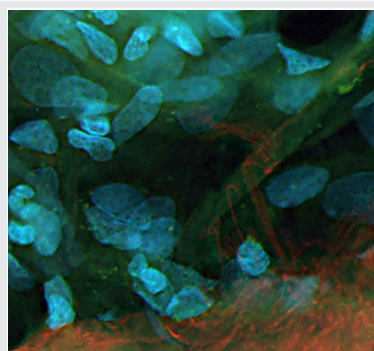
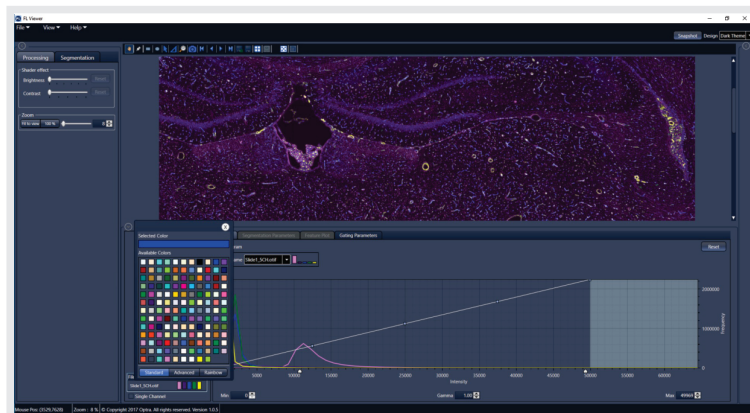


Technical Specifications

- ✓ Imaging Mode: Fluorescence and grayscale in brightfield
- ✓ File Format: JPEG2000, .otiff, BigTIFF Software can convert image file formats
- ✓ Slide Formats: Standard 25x75mm (1"x3") slides
- ✓ Dimensions & Weight: Approximate Width- 12", Length- 16", Height- 12", Weight- 60lbs Resolution: 0.50 µm/pixel at 20x, 0.25 µm/pixel at 40x
- ✓ Support for 5 fluorescence filters
- ✓ Motorized filter wheel
- ✓ Capability of changing systems filters
- ✓ 15 slide capacity
- ✓ Image Storage Space: approx. 300 MB for a single channel for a 15mm x 15 mm tissue
- ✓ Data Storage 1-10 TB
- ✓ Operating System: Windows 7, 8, 8.1, 10
- ✓ Image capture region: 25x50mm

OptraSCAN® Immunofluorescence System - IHC Multiplexing Analysis

Specialized image analysis software with user-friendly algorithm selection



Key Features

- ✓ Enables multichannel fluorescence IHC image datasets and big image data >1 PB
- ✓ User-friendly algorithms include:
 - + Segmentation
 - + Signal optimization
 - + Multi-level cell segmentation
 - + Comprehensive feature extraction
 - + Robust quantitation
- ✓ Ability to import user-specified and system validated segmentation algorithms
- ✓ 3D reconstruction from slices



Technical Specifications

- ✓ Supports standard image formats: BigTIFF, JP-2000, DICOM, CZI, PSB
 - ✓ No restriction on image size
 - ✓ Supports FCS and ICE export file formats compatible with 3rd party flow and image cytometry
 - ✓ Export capability of: quantitation analysis, high resolution data visualization and validation, xyz pixel coordinates, multi-level cell segmentation and feature extraction data
- Meyer Instruments, Inc.**
4202 Bear Lodge Court, Houston, TX 77084
281-579-0342
www.meyerinst.com