



# ACCU-SCOPE®

MICROSCOPY & IMAGING SOLUTIONS

**EXC-400**  
Clinical Microscope



***Empowering Discovery. Advancing Results.***

# Next Generation Microscopy and Imaging Solutions

## Your Flexible Clinical Microscope Platform

As a market leader in quality microscopy and imaging solutions, ACCU-SCOPE blends precision, performance, and outstanding value like no other manufacturer can. We deliver superb yet affordable optical instrumentation and microscopy innovations that help advance the work, improve the outcomes, and empower the achievements of the demanding professionals we're privileged to serve. No matter your industry, discipline, or individual endeavor, count on ACCU-SCOPE microscopy, imaging solutions, and accessories to exceed expectation as you achieve your goals.





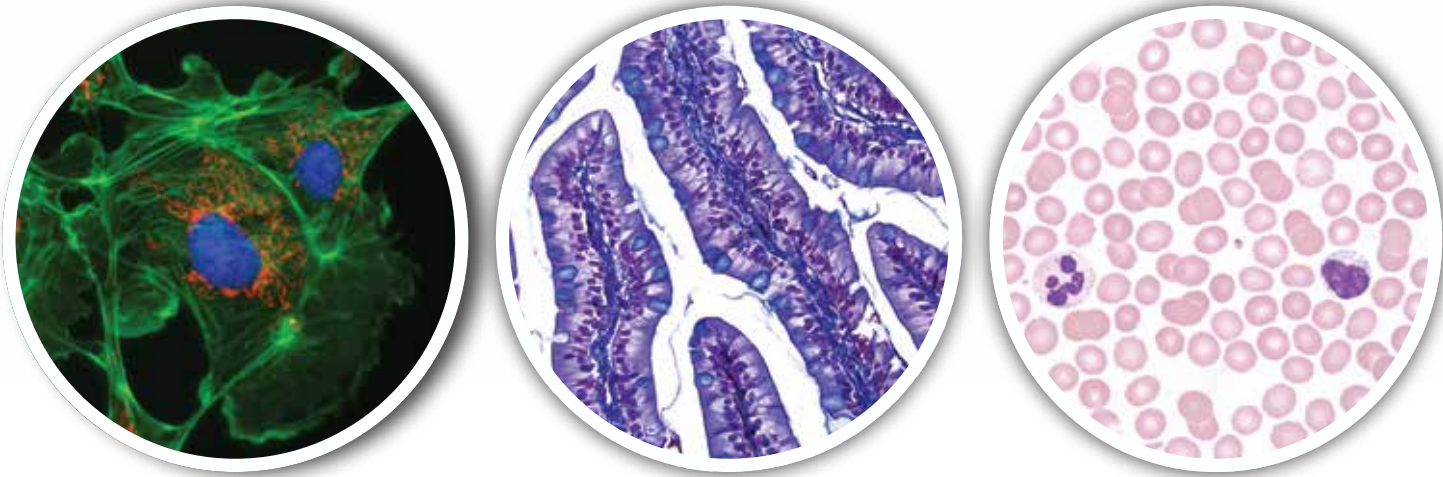
# EXC-400: Dependable Routine Clinical Microscope

The EXC-400 from ACCU-SCOPE is designed for a broad range of microscopy applications in clinical, academic, and research environments. The EXC-400 is ideal for routine observations and can be configured with several contrast methods to meet your application needs including brightfield (standard), phase contrast, polarized light, gout analysis, and fluorescence. Choose a trinocular or ergonomic binocular viewing head, or one of our dual-viewing options (available as side-by-side and front-to-back configurations). The broad triangular footprint makes the EXC-400 exceptionally stable on any bench surface.

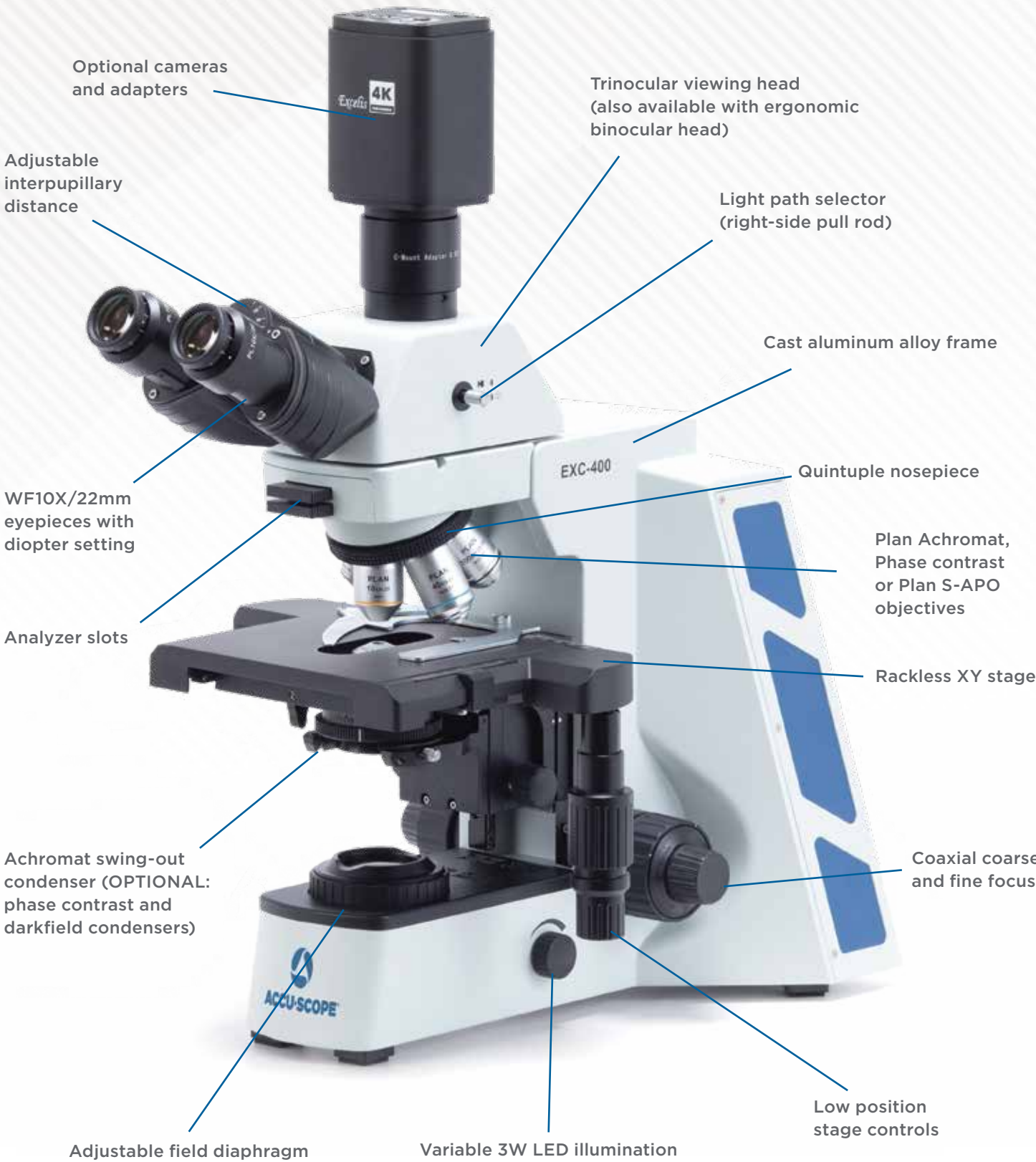
## Wide Selection of Objectives

OBJECTIVES	IMMERSION	NA	WD	COVER GLASS THICKNESS	BRIGHTFIELD	PHASE CONTRAST	FLUORESCENCE
2x Plan Achromat		0.06	18,0mm	-	●		●
4x Plan Achromat		0.10	15.0mm	-	●		●
10x Plan Achromat		0.25	10.8mm	-	●		●
20x Plan Achromat		0.40	1.5mm	0.17mm	●		●
40xR* Plan Achromat		0.65	0.8mm	0.17mm	●		●
50xR* Plan Achromat	Oil	0.95	0.18mm	0.17mm	●		●
60xR* Plan Achromat		0.85	0.3mm	0.17mm	●		●
100xR* Plan Achromat	Oil	1.25	0.21mm	0.17mm	●		●
100xR* Plan Achromat	Water	1.10	0.3mm	0.17mm	●		●
10x Plan Phase		0.25	10,8mm	-	●	●	●
20x Plan Phase		0.40	1.5mm	0.17mm	●	●	●
40xR* Plan Phase		0.65	0.8mm	0.17mm	●	●	●
100xR* Plan Phase	Oil	1.25	0.21mm	0.17mm	●	●	●
4x Plan S-APO		0.13	16.5mm	-	●		●
10x Plan S-APO		0.30	8,1mm	-	●		●
20x Plan S-APO		0.50	2.1mm	0.17mm	●		●
40xR* Plan S-APO		0.75	0.7mm	0.17mm	●		●
100xR* Plan S-APO	Oil	1.30	0.15mm	0.17mm	●		●

\*Spring-loaded



# Features That Meet Your Needs





# Customize Your EXC-400



## Extended Ergonomics

Maximize comfort and performance with an ergonomic viewing head. Low position stage, focus, and illumination controls reduce arm and shoulder fatigue.



## Contrast Methods

Expand the capability of your EXC-400 with optional contrast methods. Options include phase contrast, darkfield, and polarized light (e.g., Gout Analysis) observation. Brightfield is a standard configuration.



## Fluorescence Illumination

Add a fluorescence solution with 1, 2, or 3 channel integrated LEDs or a 6-position filter turret accepting today's LED and solid-state light sources.



## Cameras & Imaging

Add a camera for training, documentation, or consultation. Choose a trinocular viewing head or the video port intermediate accessory for camera attachment.



## Observation Options

Choose your observation option from the standard trinocular head, ergonomic binocular head, a side-by-side, or front-to-back dual viewer configuration.



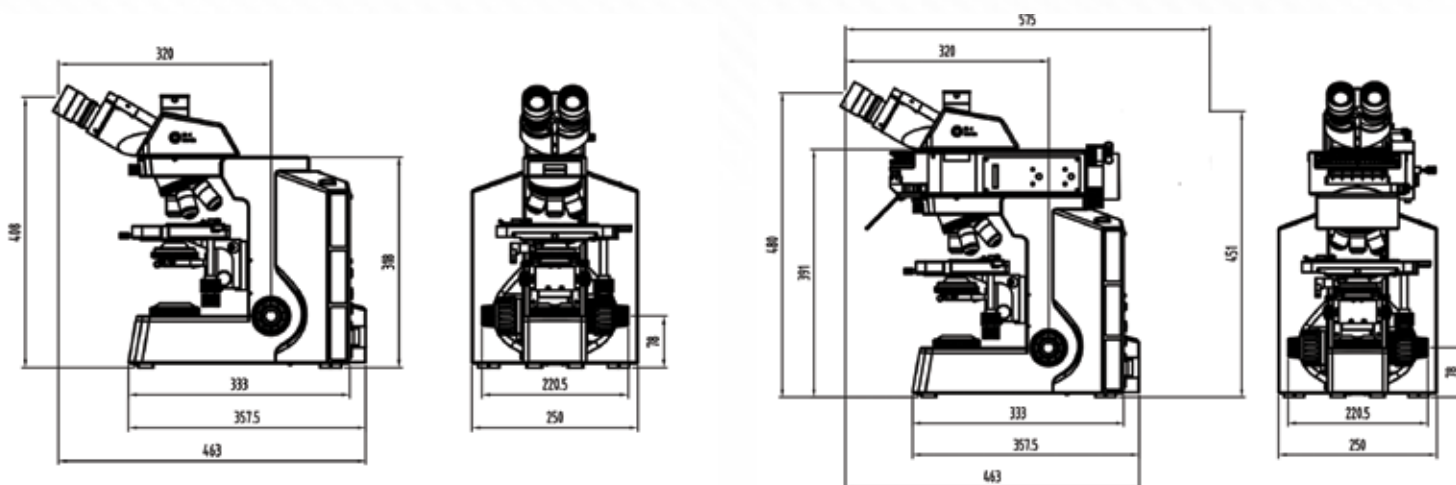
## Brilliant Optics

With objectives from 2x to 100x oil immersion, you choose the best optics for your application. Most are available as Plan Achromat, Semi-Apochromat, or Phase Contrast.

# EXC-400 Clinical Microscope

## SPECIFICATIONS

Optical System	Infinity optical system, f = 180mm, anti-mold
Viewing Heads	Trinocular-choose eyepiece/camera light distribution: 0:100 /50:50 split or 100:0 / 0:100 split; 30° inclined, rotatable 360° Optional: ergonomic tilting binocular (0° - 35°), two-head front-to-back or side-by-side teaching configurations, camera port accessory
Objectives	Plan Achromat 2x, 4x, 10x, 20x, 40xR*, 50xR* oil immersion, 60xR*, 100xR* oil immersion; Plan Semi-Apochromat 4x, 10x, 20x, 40xR*, 100xR* oil immersion; Phase Contrast 10x, 20x, 40xR*, 100xR* oil immersion (*spring loaded)
Eyepieces	WF10x/22mm focusable eyepieces with diopter adjustment and eye guards Optional: 15x/16mm (accepts 20mm reticle) and 20x/12.5mm eyepieces
Nosepiece	Reversed quintuple ball bearing nosepiece with positive click stops
Focusing System	Coaxial focusing system with adjustable tension control and upper limit stop; all metal gears, brass for fine focus gear
Stand	Cast aluminum alloy
Stages	Hard-coated, rackless mechanical stage with low-position coaxial controls; 175mm x 153mm with X-Y movement range of 76mm X 50mm
Condenser	Achromat swing-out condenser, N.A. 1.2/0.22 on a rack and pinion with iris diaphragm Optional: Turret phase contrast condenser, 10x, 20x, 40x, 100x Phase annuli; darkfield condenser
Illumination	3 Watt variable LED illuminator with variable intensity control and field iris diaphragm; LED bulb is rated for over 20,000 hours of continued use; universal power supply 110-240V
Accessories	Dust cover, instruction manual (included)
Optional Accessories	Fluorescence attachments, fluorescence filter sets; analyzer, polarizer, 360° rotatable polarizer, Gout kit; 45mm LBD, yellow, green, and ND filters
Warranty	5 Year limited warranty for parts, labor and electronic components 1 Year warranty on LED bulb



Units: mm



Copyright © 2022 ACCU-SCOPE Inc. All rights reserved. Printed in the U.S.A.  
ACCU-SCOPE Inc. reserves the right to change and improve specifications without notice due to technological or manufacturing advances.



v092622

Meyer Instruments, Inc.  
4202 Bear Lodge Court - Houston, TX 77084  
281-579-0342 www.meyerinst.com rdm@meyerinst.com