

Motic Digital Pathology



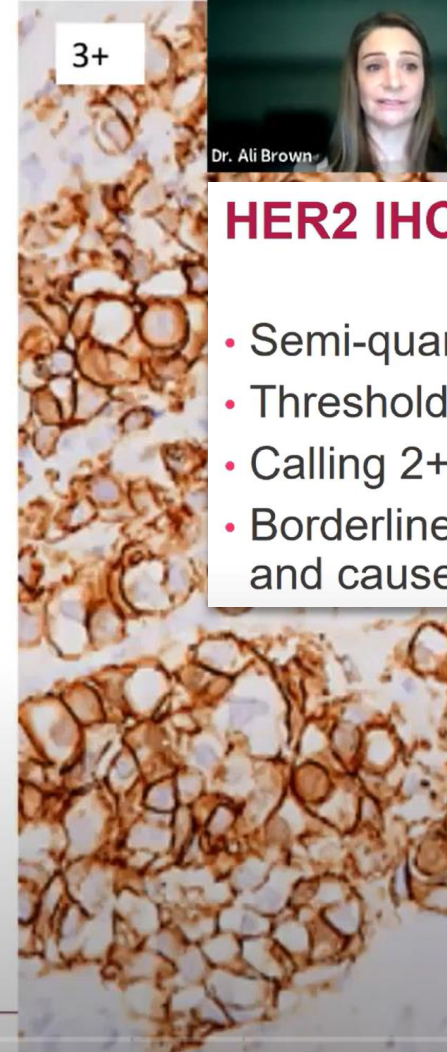
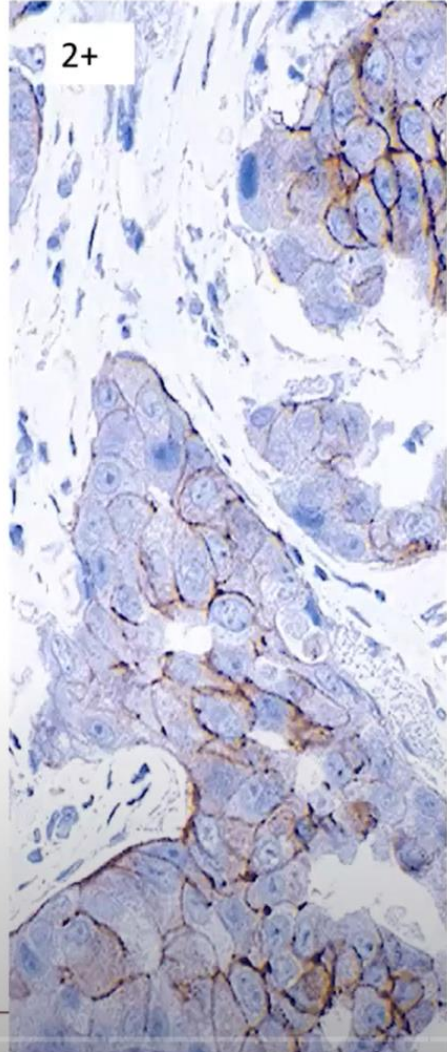
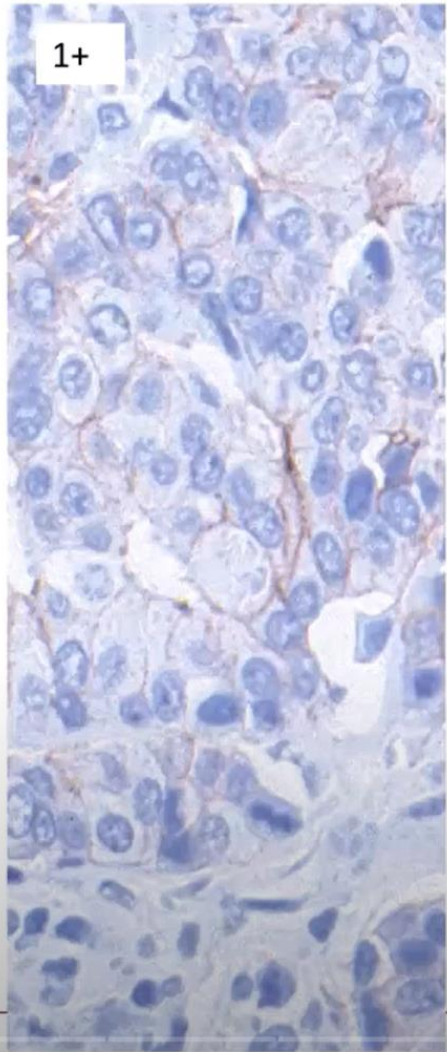
Motic Digital Pathology's guiding principles

Compatibility

Efficiency

Flexibility

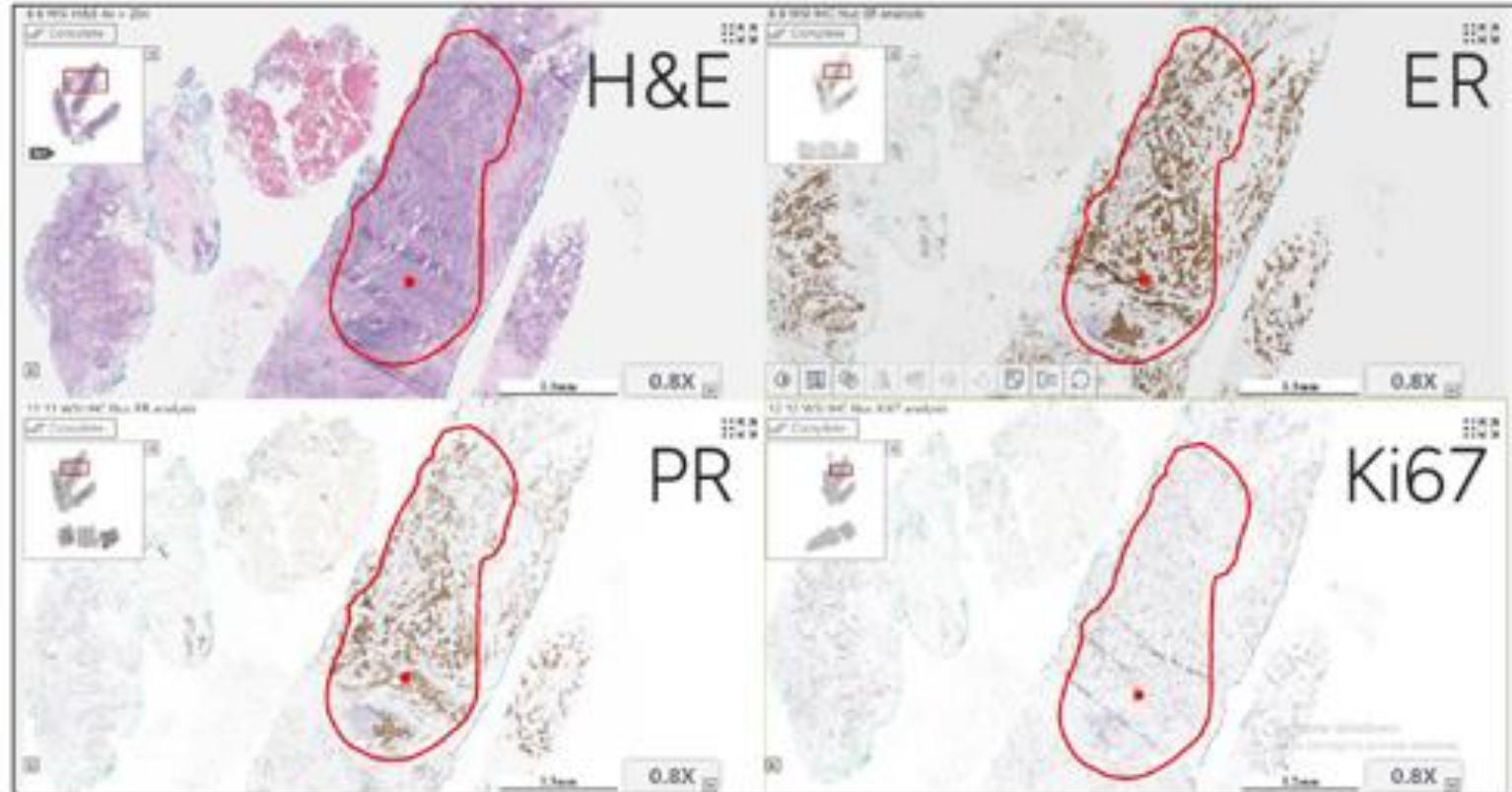
Digital Pathology makes IHC staining easier to quantify



HER2 IHC Scoring Variation

- Semi-quantitative assessment
- Threshold for 1+ versus 2+
- Calling 2+ will reflex to FISH
- Borderline cases will still occur and cause some subjectivity

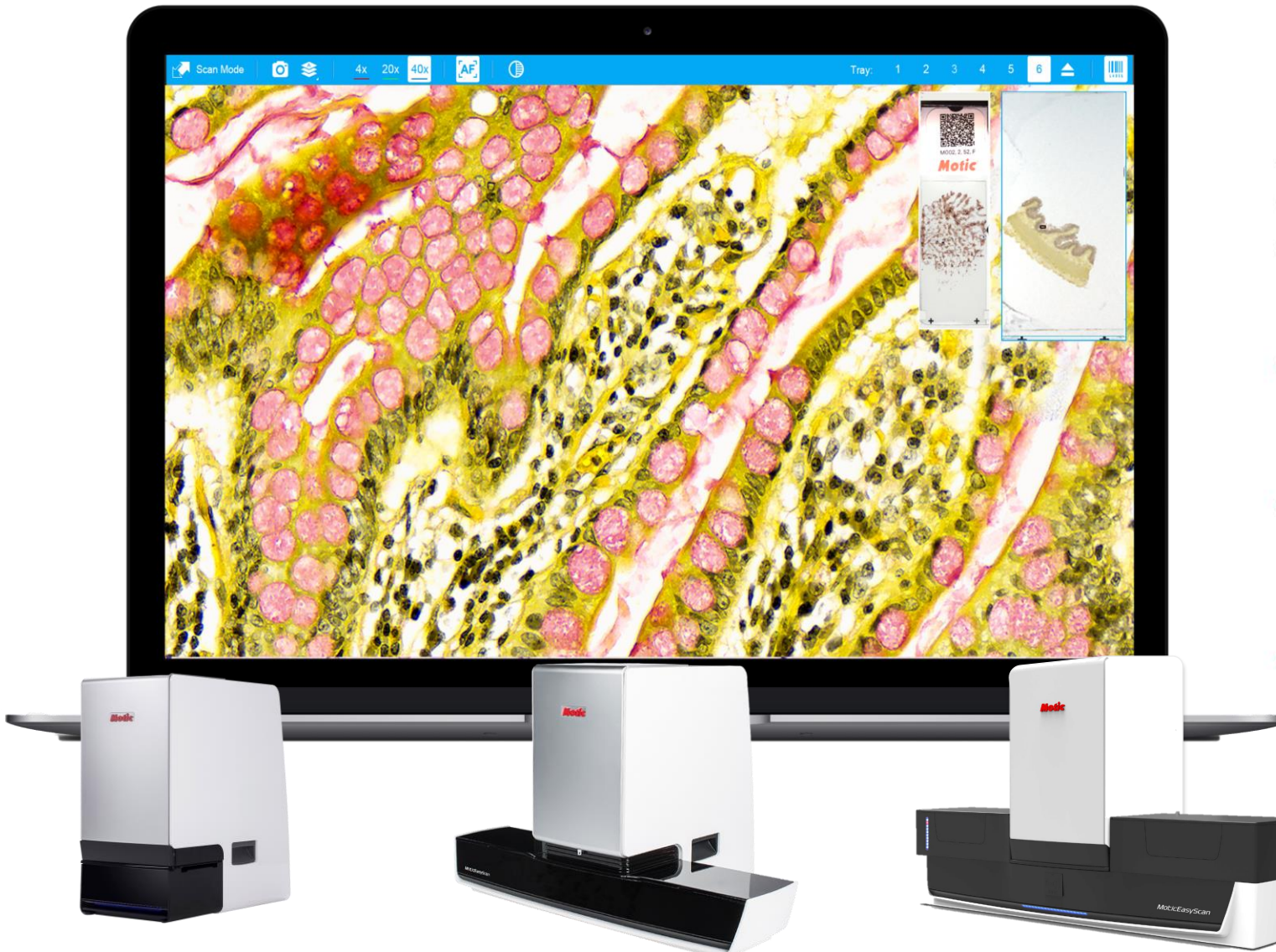
Motic's open-source imagery is widely compatible with quantification tools



Motic + ASI collaboration features analysis software that can automatically fit annotations from H/E onto their IHC serial sections



Motic's FS-Live software now available on all EasyScanner models



Review slides live from anywhere

A ground-breaking system built for real-time remote diagnosis and intraoperative consultations on frozen sections, FNAs, and other cytology adequacy checks.

View and control live

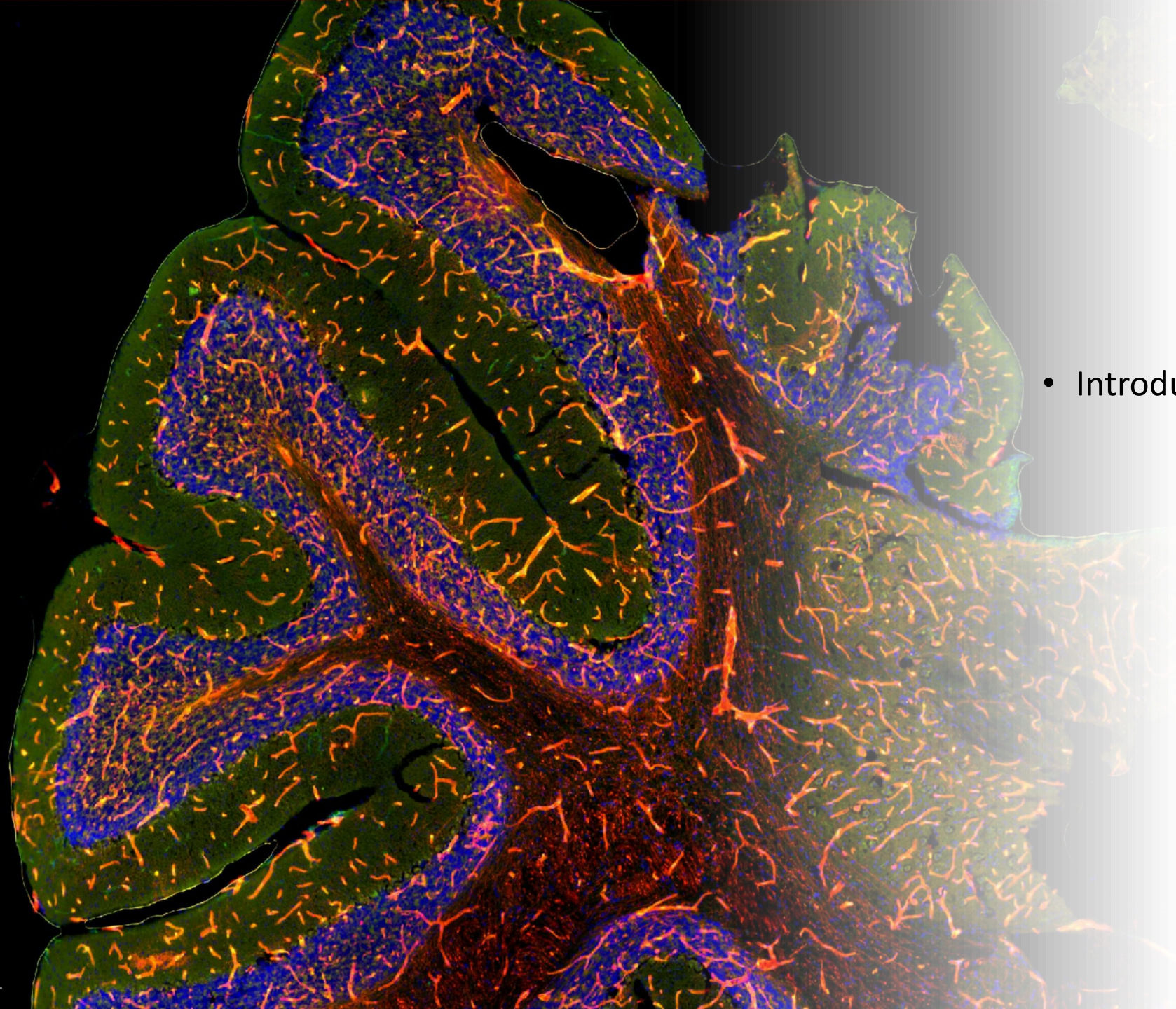
- Take full control and operate the scanner like a robotic microscope

Intuitive and easy to use

- Designed for live slide review and seamless pathologist-technician communication.

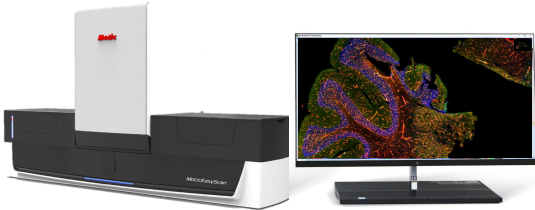
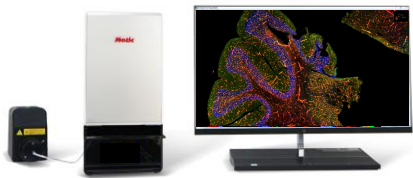
Save time and money

- Check slides from remote sites or the home office, eliminating cross-campus travel and shipping of glass slides.



- Introducing MoticFlexScan

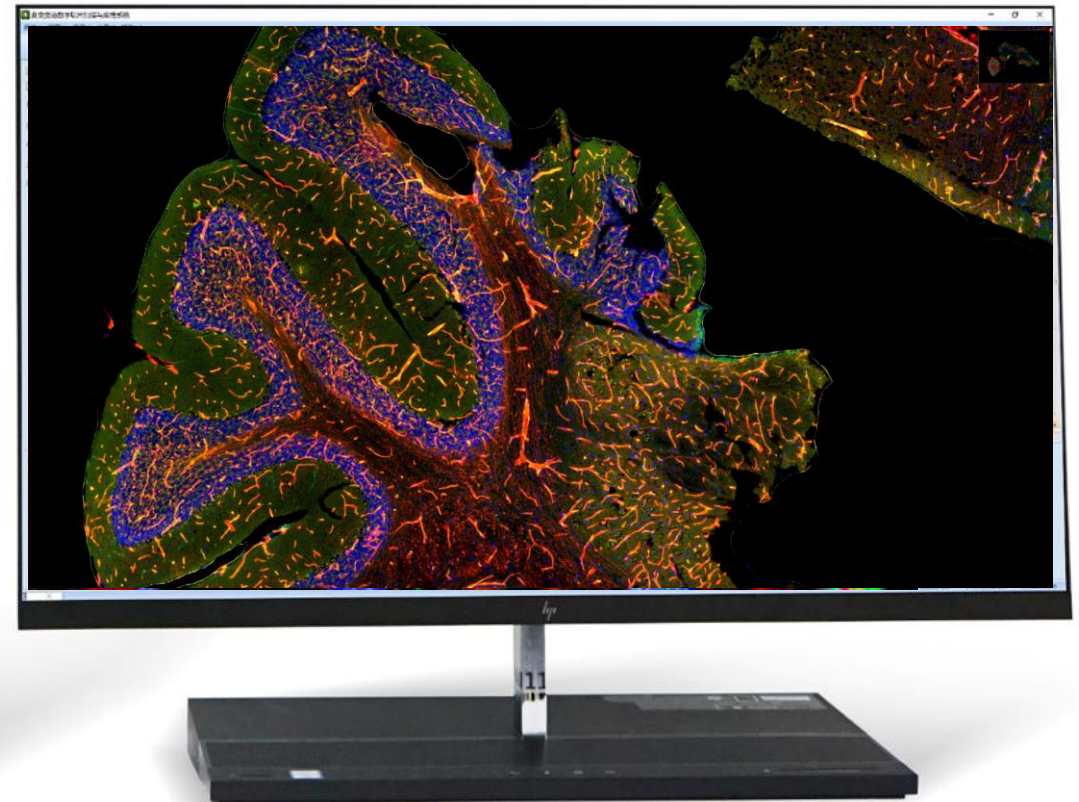
MoticFlexScan Series



	MoticFlexScan 1	MoticFlexScan 60
Camera	5MP color camera	5MP color camera
Objective configurations	4x (for FL overview image) 20x 0.5NA 40x 0.75NA	4x (for FL overview image) 10x 0.3NA 20x 0.5NA
Highest resolution	0.13um/px	0.26 um/px
Fastest scanning speed	Brightfield H/E stained tissue @40x, 15x15mm in ~3min	Brightfield H/E stained tissue @20x, 15x15mm in ~2min
Fluorescent Wavelengths	DAPI, FITC, TRITC	DAPI, FITC, TRITC
Maximum Slide Capacity	One	sixty

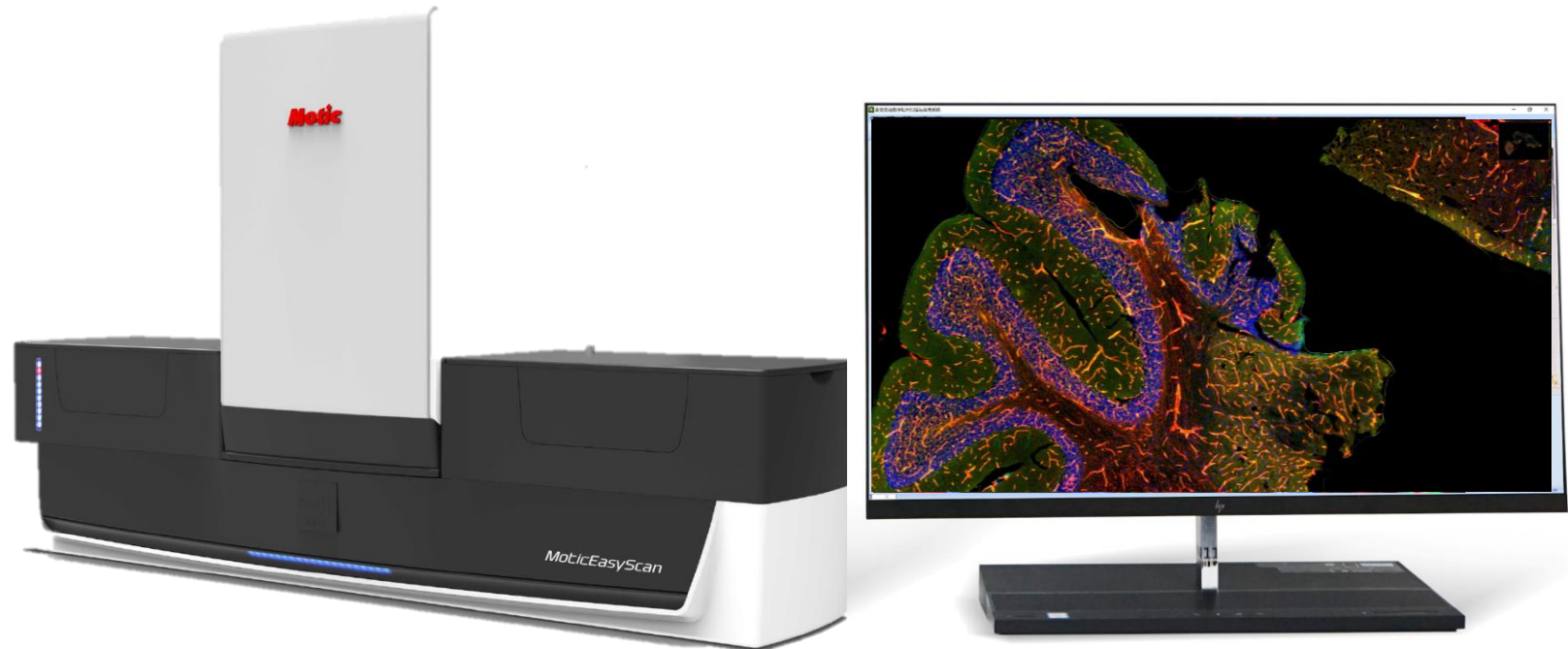
MoticFlexScan 1

- Combo BF and FL desktop whole-slide scanner
- 3-Color FL (DAPI, FITC, TRITC)
- 40x or 80x whole-slide scanning
 - 3min BF scan time
15x15mm @40x
 - 15min FL scan time
15x15mm, 3 colors @40x
- Single slide capacity



MoticFlexScan 60

- Combo BF and FL benchtop whole-slide scanner
- Tray-based continuous loading for up to sixty slides
- BF and FL whole-slide scanning at 20x or 40x
- 3-Color FL (DAPI, FITC, TRITC)
- ROI detection w/ DAPI
- Preview mode
- Batch apply exposure settings



Motic Digital Pathology for compatibility, efficiency and flexibility

"MoticEasyScan Series"	Two	Pro 6	Pro 24	Infinity
Capacity	2	6	24	102
FS Live	Yes	Yes	Yes	Yes
Preview Mode	Yes	Yes	Yes	Yes
Smart Tray image QC	No	No	No	Yes
			***New in 2024: Infinity upgrade kit for Pro24 scanners allows users to start small and scale capacity when ready	

"MoticFlexScan Series"	FlexScan 1	FlexScan 60
Capacity	1	60
FL Plex	3	3
Preview Mode	Yes	Yes
Smart Tray image QC	No	No

Reliable high-quality scalable brightfield scanning and industry leading live mode

Scalable application support for;

- Low, medium or high-volume frozen section live
- Routine H/E + IHC panels
- Non-coverslip smears

Fast brightfield & low-plex fluorescence in one box

For higher volume applications including;

- Kidney
- Skin
- FISH