

# Image-Pro<sup>®</sup> AI

## for Life Science

AI-Powered Image Analysis Software for Research Microscopy

## Life Science analytics at any scale

No matter the magnification or modality, obtain quantitative results you can trust.

### Stained Tissues & Colonies

- ✓ Colonies on media
- ✓ Immunohistochemistry
- ✓ Whole slide scans

### Unlabeled Cells

- ✓ Brightfield
- ✓ Phase Contrast
- ✓ DIC

### Fluorescently Labeled Cells

- ✓ Widefield
- ✓ Confocal
- ✓ Multiphoton

### EM Heavy Metal Stained Cells

- ✓ SEM & TEM
- ✓ FIB-SEM
- ✓ Serial blockface

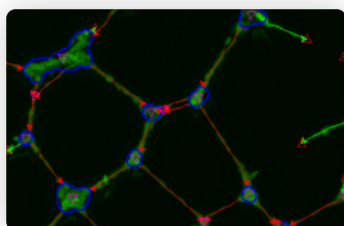
## Efficient AI-powered analysis

Designed specifically for analysts that need rapid, trusted results. Image-Pro organizes your analysis routines into a few easy steps and leverages pre-trained deep learning networks to segment and measure your data accurately at scale.

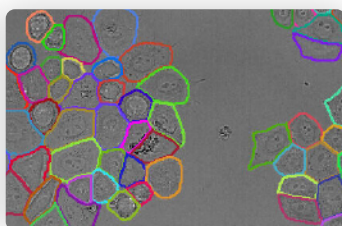


## Pre-trained solutions make analysis easy

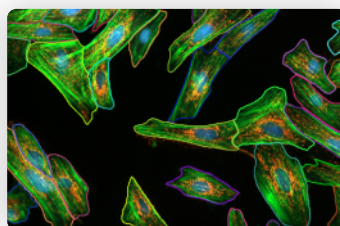
Combine Pre-trained CNN Models and workflow-specific Analysis Protocols to analyze any cellular structure.



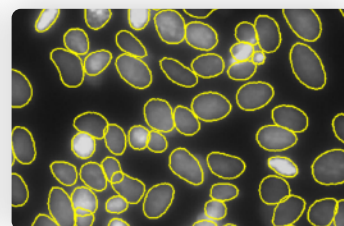
Angiogenesis (Tube Formation)



Cell Count (Label-Free)



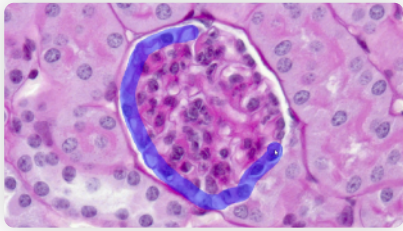
Cell Morphology



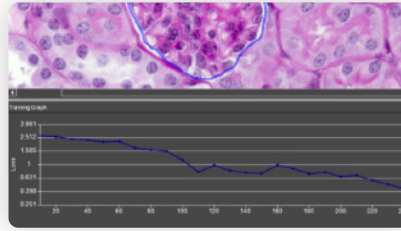
Overlapping Nuclei (Fluorescence)

# Fine-tune any Pre-Trained Model for your image

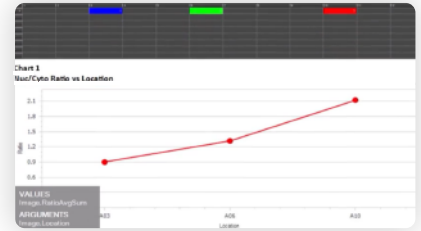
When a model misses a few objects of interest, simple "human-in-the-loop" training can be used.



Label your objects



Train a model



Report data



## Superior outline accuracy

Even the most complicated edges can be traced with high quality. AI Models work similar to the human brain, finding objects undeterred by dim, complex edges.



## User-friendly operation

AI Deep Learning Segmentation requires minimal input to operate efficiently. Simple controls, limited options, and fast prediction results.



## Secure & confidential

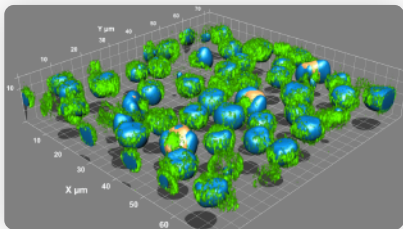
No uploading or downloading required. Save time and avoid sharing your data on unsecure company servers. All operations are on-device.



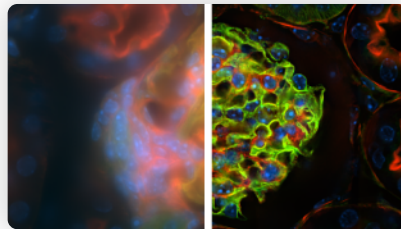
## Protocol-ready

Integrate Deep Learning Segmentation accuracy into an automated workflow by saving an Analysis Protocol with a custom or pre-trained model.

## Add-on functionality



3D Analysis & Visualization



AutoQuant Deconvolution



Success Plans for Peace-of-Mind

TRUSTED BY COMPANIES AROUND THE WORLD



## Like what you see?

Schedule a demo with an imaging expert.

**Meyer Instruments, Inc.**

4202 Bear Lodge Ct. Houston, TX 77084

[www.meyerinst.com](http://www.meyerinst.com) 281-579-0342 [rdm@meyerinst.com](mailto:rdm@meyerinst.com)

