

GLISSANDO RS2

DIGITAL PATHOLOGY SCANNER FOR 2 SLIDES



GLISSANDO RS2 DESKTOP SLIDE SCANNER WITH EXCEPTIONAL IMAGE QUALITY AND PERFORMANCE

The Glissando RS2 two-slide digital pathology slide scanner combines the exceptional whole slide image scan quality and flexibility of Objective Imaging's standard Glissando scanner, while significantly improving its already best-in-class scanning speed, all within a compact footprint that easily fits into any situation.

The flexible and robust holder design supports both standard and mega slides, offering confident, safe operation without any direct internal handling of glass. The proven Glissando scanning engine ensures maximum image fidelity and flexible scanned image output formats. Even the most difficult specimens can be scanned successfully using a workflow that combines automated tissue detection with a quick scan preview prior to high resolution scanning.

Offering both high performance WSI scanning as well as an optional Live Explorer mode for interactive live slide review, the Glissando RS2 is ideal for a wide range of use cases, including frozen section review.

KEY FEATURES

- ◆ Capacity for 2 standard slides or 1 mega slide
- ◆ Single plan apo objective lens offering both 40X and 20X scanning magnifications
- ◆ Scan preview wizard ensures successful high-quality WSI results
- ◆ Brightfield 2D scanning as well as multiple Z-stack scanning modes
- ◆ Direct scanning to SVS format and optional DICOM output
- ◆ Live Explorer option for rapid frozen section live review with quick region of interest scanning

FOR RESEARCH USE ONLY. NOT FOR USE IN DIAGNOSTIC PROCEDURES.

GLISSANDO RS2

SLIDE SCANNER



SPECIFICATIONS

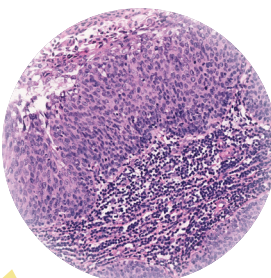
Capacity	2 standard 75x25mm slides or 1 double-width 75x50mm mega slide
Scanning Magnifications	40X and 20X scanning modes
Scan Image Resolutions	0.26 µm/pixel (using 40X magnification) 0.52 µm/pixel (using 20X magnification)
Scanning Objective Lens	Plan Achromat 20X/0.8
Scan Times	40X magnification, SVS format: 15 x 15 mm = 67 seconds 30 x 15 mm = 104 seconds 55 x 41mm = 7 minutes, 50 seconds
Z-stack Scanning	Yes, with 3D and extended focus modes
Scan Outputs	SVS, SWS, TIFF/BigTIFF, DICOM (optional) with user-configurable compression
XY Stage Resolution	0.1 micron, encoded
Z Focus Resolution	0.04 micron, encoded
Barcode Reader	Image-based 1D and 2D (Datamatrix, QR Code), user-configurable
Live Mode	Optional Live Explorer with live camera view and region of interest scanning
Control Computer	Attached mini-PC with Ethernet connection and control monitor
Storage	500GB system SSD and 2TB data SSD
Dimension and Weight	535mm (L) x 345mm (W) x 303mm (H); 25.5Kg (56lb) including PC
Electrical	Universal AC input, 50/60 Hz
Certifications	Electrical: EN61326-1: 2021; EN IEC 61326-1: 2021; CFR47 (Part 15):2024

THE OBJECTIVE IMAGING DIGITAL PATHOLOGY FAMILY

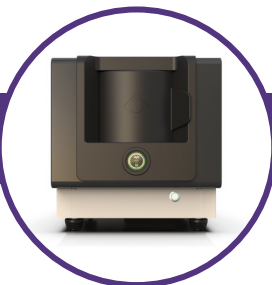
GLISSANDO RS2



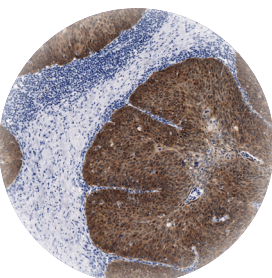
Compact, high quality scanner with a capacity for 2 slides.



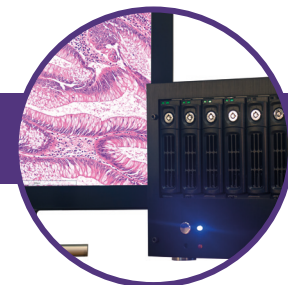
GLISSANDO RS20



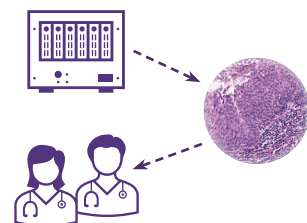
Auto-loading 20-slide scanner for medium capacity scenarios.



GLISSANDO IMAGE SHARE



Stand-alone whole slide image archiving and sharing workstation.



NEW GLISSANDO AUTOMATED POL SCANNER COMING IN 2026